



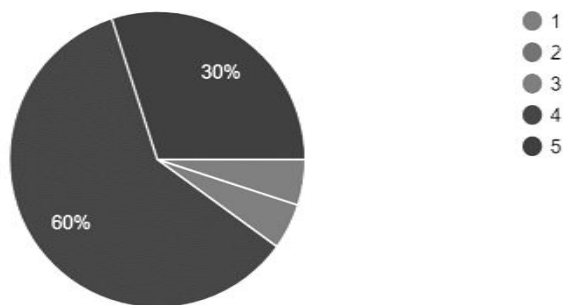
Maharaja Education Trust ®  
**MIT First Grade College**

(Affiliated to University of Mysore)  
Industrial Suburb, Manandavadi Road, Mysuru -570008

**BBA-DEPARTMENT OF COMMERCE**  
**EXIT SURVEY ANALYSIS - 2021-2022**

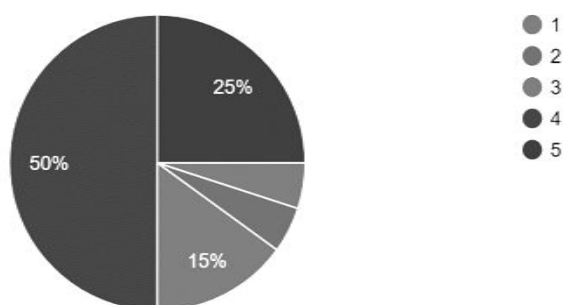
1. Academic Excellence is acquired during the program.

20 responses



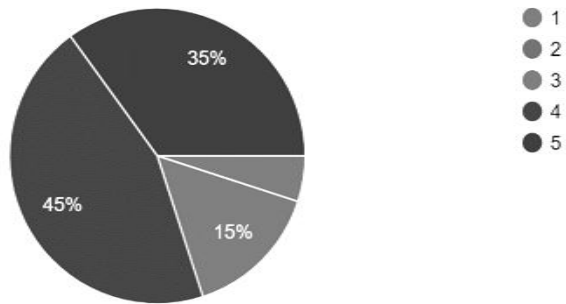
2. Level of personal Transformation instilled in you on the completion of the Program

20 responses



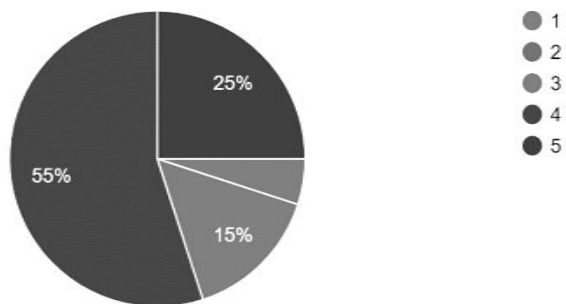
### 3. Level of employability skills acquired as business administration students.

20 responses



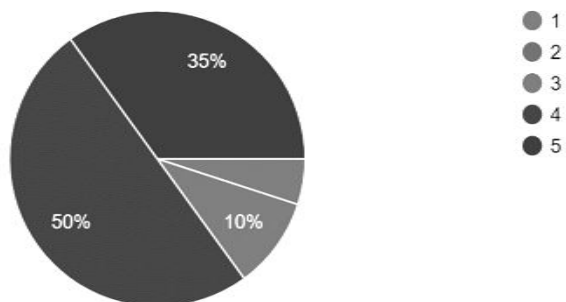
### 4. Level of meeting industrial employment.

20 responses



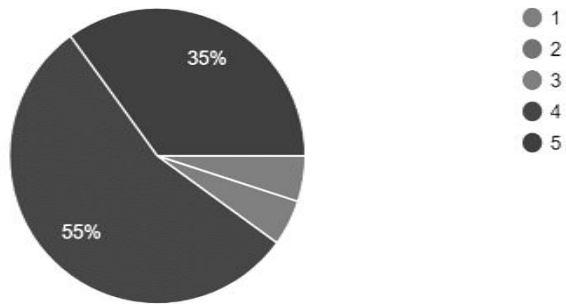
### 5. Level of understanding the subjects and its application to real life practices.

20 responses



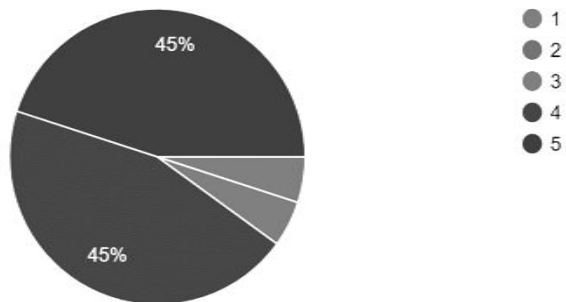
6. Understanding the importance of professional ethics values in the real world practices.

20 responses



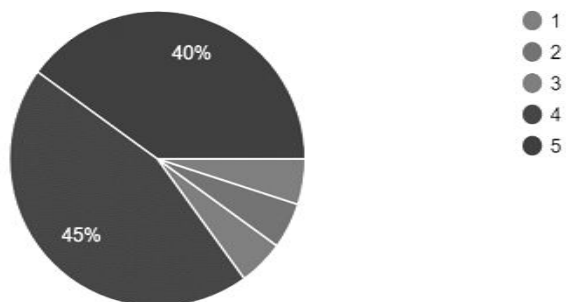
7. Intra and interpersonal skills acquired during the program.

20 responses



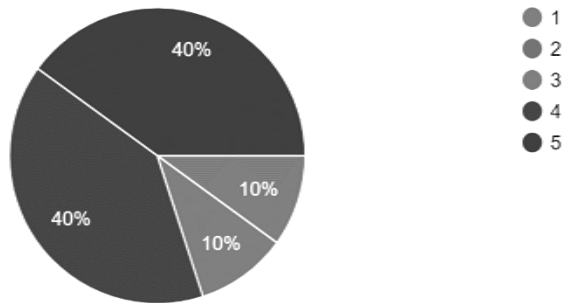
8. Opportunities gained to develop leadership skills during the program Span.

20 responses



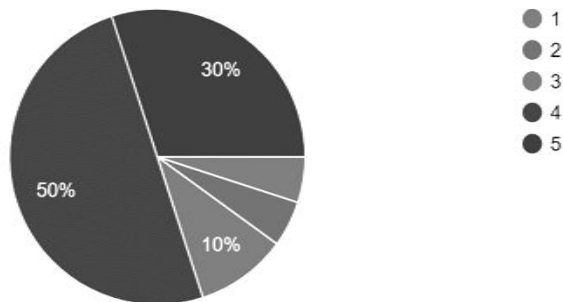
9. Usefulness of professional core courses in enhancing your aptitude, knowledge base and job preparations.

20 responses



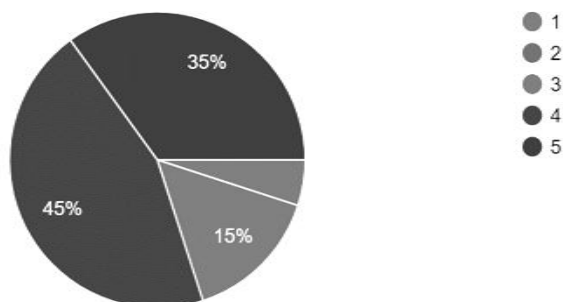
10. Oral and written Communication skills gained on the completion of the program.

20 responses



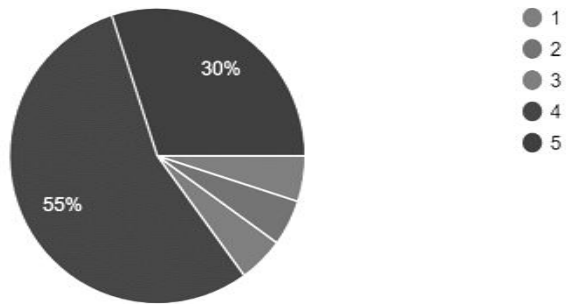
11. Confidence gained on the core and technical aspect of the program as management graduates.

20 responses



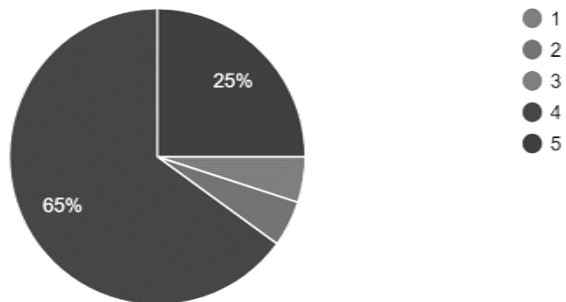
### 12. Enhancement of entrepreneurial skills during the program.

20 responses



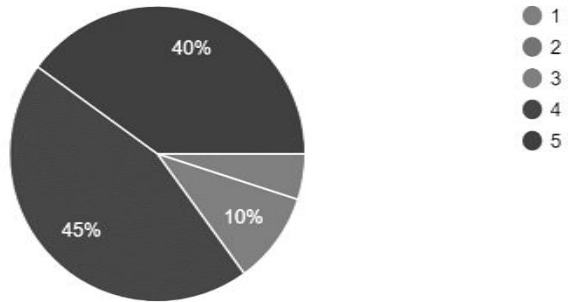
### 13. Development of Research oriented skills to implement in new and unknown areas of business administration

20 responses



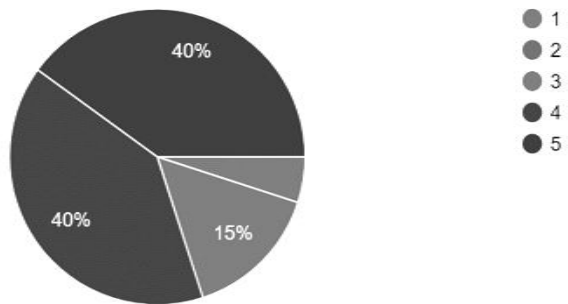
#### 14. Behavioral development as a Responsible citizen of the nation.

20 responses



#### 15. Level of Holistic development of the personality of a student.

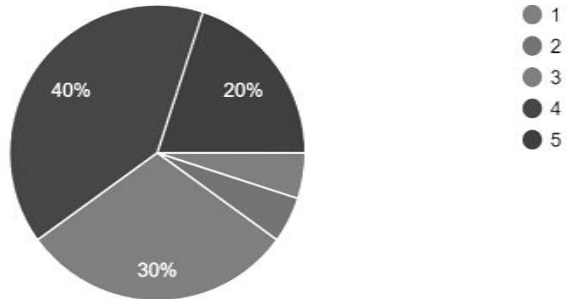
20 responses



# OPINION ON INFRASTRUCTURE SERVICES

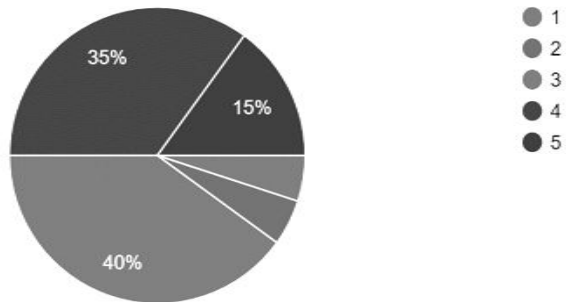
## 1. Library services of the College

20 responses



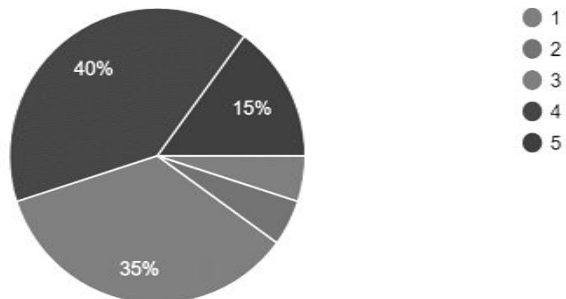
## 2. Administarion services of the College.

20 responses



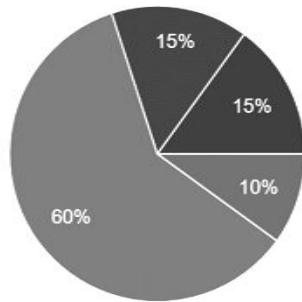
## 3. General infrastructure of the College.

20 responses



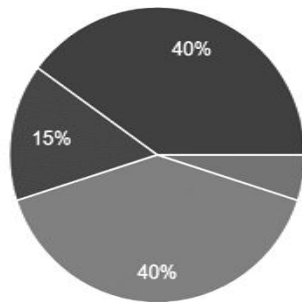
#### 4. Claiming of scholarship facilities .

20 responses



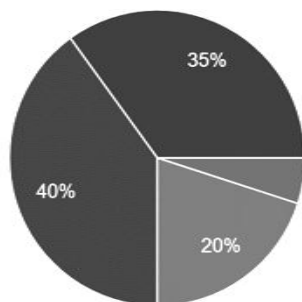
#### 5. Computer lab and lab equipment available in the College.

20 responses



#### 6. NSS support services in student development.

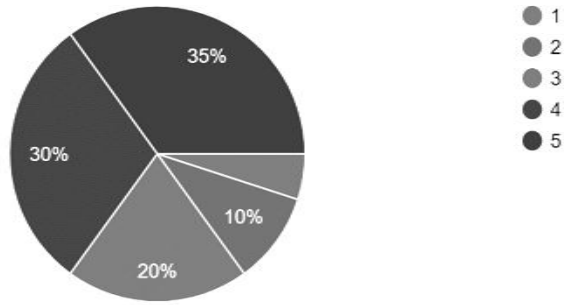
20 responses





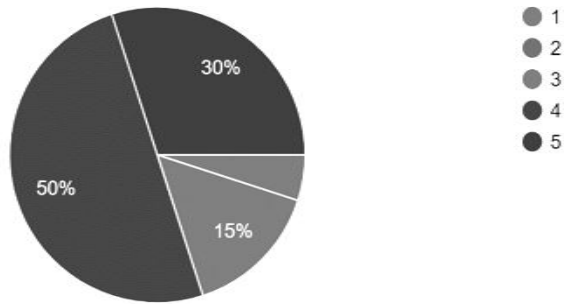
### 7. Hygiene and Cleanliness maintenance of the College.

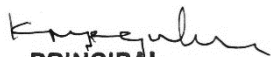
20 responses



### 8. Overall facilities available in the College.

20 responses



  
**PRINCIPAL**  
**MIT FIRST GRADE COLLEGE**  
# F-29/1, 3rd Stage, Industrial Suburb,  
Fort Mohalla, Mysuru-570 008