

# COMMITTEE MANUALS

---

## Equal Opportunity Cell

*Until we get equality in education, we won't have an equal society.*

*-Sonia Sotomayor*

### **About the College**

MIT First Grade College previously Gopalaswamy College of Professional Studies established in the year 2009 by Maharaja Education Trust with the aim to provide quality education, culturally and academically for enthusiastic and upcoming youth. MIT First Grade College is focused to offer high quality career oriented learning environment with its excellent and dedicated management and staff. Our college has earned a strong academic reputation since its inception. Every year, a good number of students secure rank and distinction in university examination. Most of our students have become entrepreneurs, joined reputed organisations, and opted for higher education.

### **Overview of Equal Opportunity Cell**

India a country of diversities, is characterized by different religion, caste, creed and sect. In order to overcome social deprivation, gender inequality, imbalance in the economic status and ensure upliftment of these communities an equal opportunity cell is established. Equal Opportunity Cell of the college ensures that all students are treated as equal and attempts to address deep-seated inequalities in our system. It operated to address the issues concerning SC, ST, OBC, PwD and gender disparities in the educational system as well in society.

### **Objectives:**

- To effectively implement the policies and programmes framed for the upliftment of these weaker sections, specially challenged and women and to provide guidance and counselling with respect to academic, financial, social and other matters and to enhance the diversity within the campus.
- To create an atmosphere of Equal Opportunity through awareness generation programmes.
- To provide auxiliary support towards skill development and enhancing the employability of students.
- To tailor development and sensitization programmes to meet the distinct needs of the students.
- To expedite legal Redressal in matters of violation of equal opportunity.



## COMMITTEE MANUALS

---

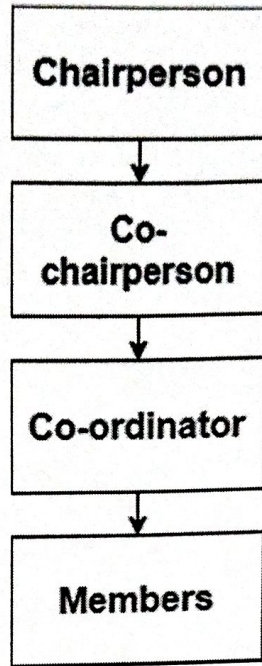
### **Roles & Responsibilities:**

- To ensure equity and equal opportunity to the community at large in the college and bring about social inclusion.
- To look into the grievances of the weaker section of society and suggest an amicable solution to their problems.
- To disseminate the information related to schemes and programmes for the welfare of the socially weaker section students.
- Understand the problem of students and faculty belonging to SC/ST/OBC/PWD and take necessary action and/or render them necessary advice/help to resolve the matter that may be academic or administrative.
- Create awareness among the SC/ST/OBC students regarding the various Government and Non-Government scholarship schemes.
- Counsel the students to help them overcome inferiority complex related to interaction with fellow students and personal grooming, etc.
- Promote higher education among the SC/ST/OBC or weaker communities that are suffering from economic, social and educational deprivations.
- Continuously monitor and evaluate the reservation policies and other programs intended for SC/ST/OBC by the GOI for their effective implementation at the institute.
- Suggest follow-up measures to the administration of the Institute for achieving the objectives and targets laid down by MHRD, GOI for the empowerment of SC/ST/OBC.
- To organize periodic meetings to monitor the progress of different schemes.



# COMMITTEE MANUALS

## Hierarchy of Positions:



## Members of Equal Opportunity Cell for the Academic Year 2021-22:

Sl.No	Name	Designation	Department	Position	Signature
1	Prof. K Nage Gowda	Principal	Commerce	Chair Person	
2	Dr. Chandrajith M.	Vice-Principal	Computer Science	Co-Chairperson	
3	Mr. T S Rakshith Kesari	Assistant Professor	English	Coordinator	
4	Mr. K. Arun Kumar	Assistant Professor	Commerce	Member	
5	Mr. M.Shiva Kumar	Manager	Administration	Member	
6	Kavana V	Student	B Com	Member	
7	Manoj Kumar Sing	Student	BCA	Member	

Principal  
**PRINCIPAL**  
M.I.T. FIRST GRADE COLLEGE  
# F-29/1, 3rd Stage, Industrial Suburb  
Fort Mohalla, Mysuru-570 008